

IRONWOOD

CRANBOURNE NORTH



ELWOOD 28

From

\$674,100

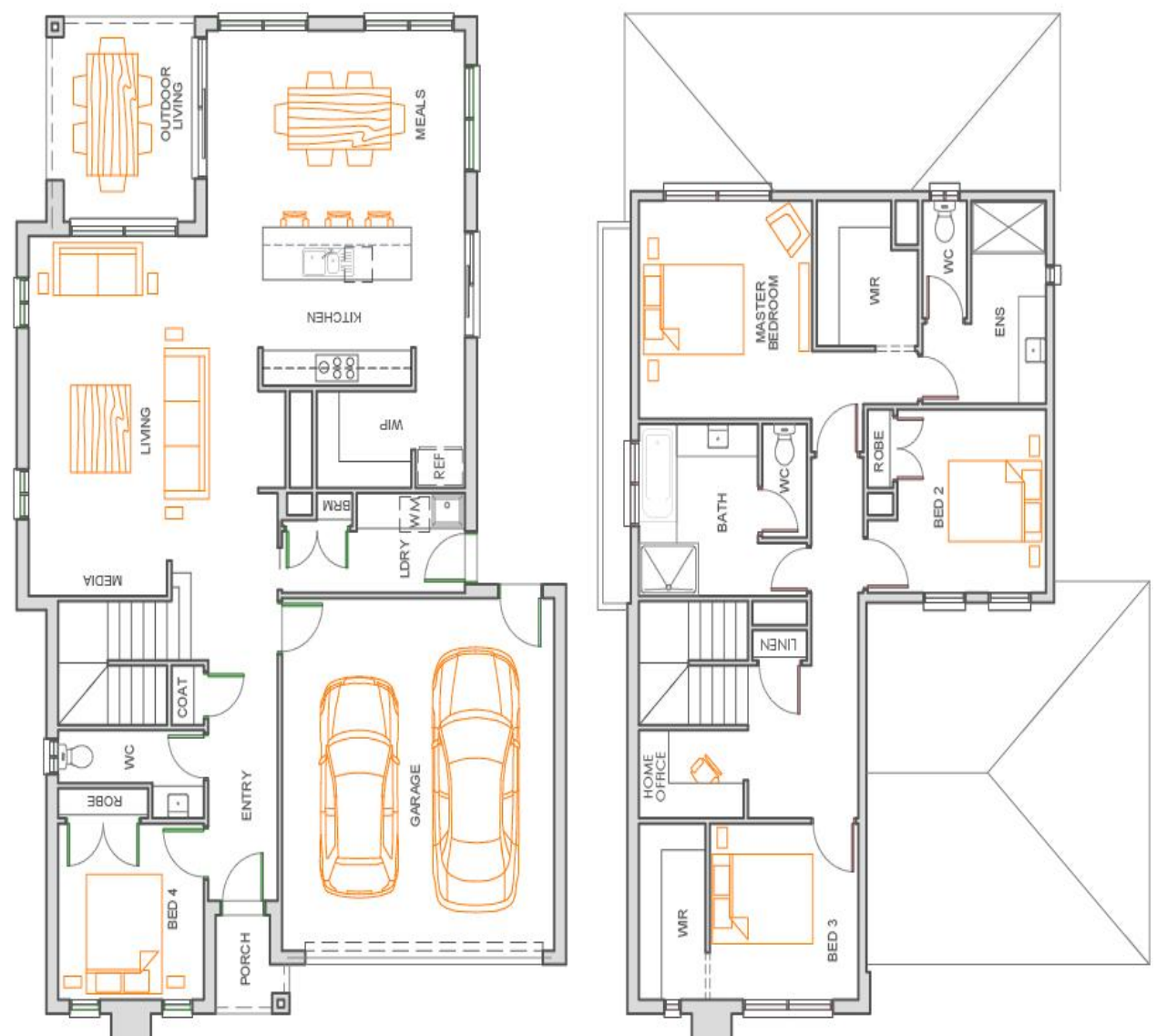
LOT 123 (375m²)

**beachwood
constructions**

www.beachwood.melbourne

MORE QUALITY INCLUSIONS

- STONE BENCHTOPS TO KITCHEN
- TILED SPLASHBACK TO KITCHEN
- LED DOWNLIGHTS TO LIVING AREA
- SOFT CLOSE DRAWS THROUGHOUT
- IN CUPBOARD TWIN RUBBISH BIN
- FISHER & PAYKEL APPLIANCES INCLUDING DISHWASHER
- TILED SHOWER BASE TO ENSUITE & BATHROOM
- GAS DUCTED HEATING
- REMOTE CONTROL PANEL LIFT GARAGE DOOR WITH DRIVEWAY
- FLYSCREENS & WINDOW LOCKS TO ALL OPENABLE WINDOWS
- INDEPENDENT QUALITY INSPECTIONS THROUGHOUT THE BUILD PROCES
- FREE SOLAR
- FREE EVAPORATIVE COOLING
- FREE FLOORING UPGRADES TILL 20/12/18



Call **BELINDA JACKSON** on 0425 853 625 to discuss your new home at Ironwood
ironwood.net.au