

# IRONWOOD

CRANBOURNE NORTH



## PORTSEA 25

From

\$660,310

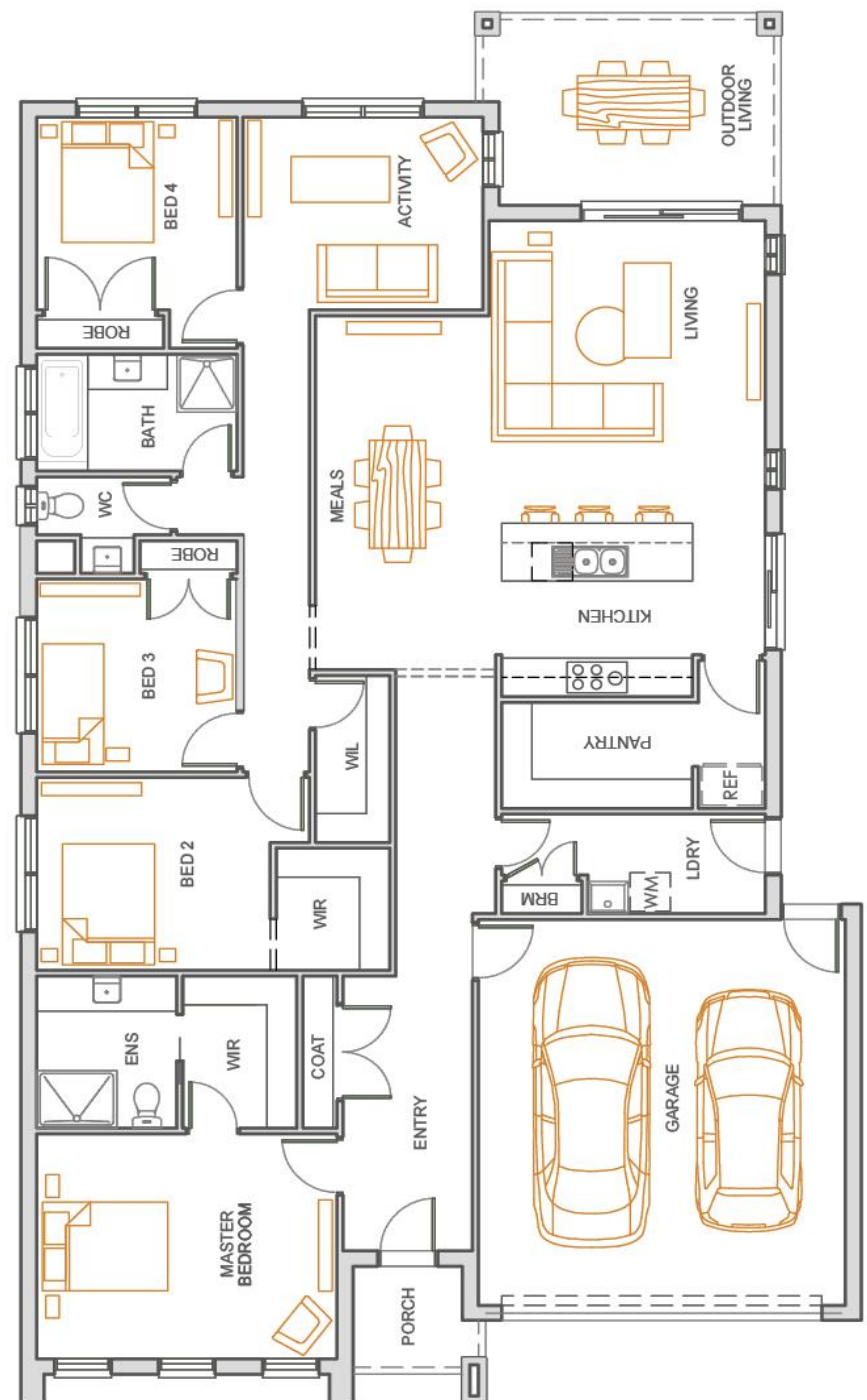
LOT 113 (420m<sup>2</sup>)

beachwood  
constructions

www.beachwood.melbourne

### MORE QUALITY INCLUSIONS

- STONE BENCHTOPS TO KITCHEN
- TILED SPLASHBACK TO KITCHEN
- LED DOWNLIGHTS TO LIVING AREA
- SOFT CLOSE DRAWS THROUGHOUT
- IN CUPBOARD TWIN RUBBISH BIN
- FISHER & PAYKEL APPLIANCES INCLUDING DISHWASHER
- TILED SHOWER BASE TO ENSUITE & BATHROOM
- GAS DUCTED HEATING
- REMOTE CONTROL PANEL LIFT GARAGE DOOR WITH DRIVEWAY
- FLYSCREENS & WINDOW LOCKS TO ALL OPENABLE WINDOWS
- INDEPENDENT QUALITY INSPECTIONS THROUGHOUT THE BUILD PROCES
- FREE SOLAR
- FREE EVAPORATIVE COOLING
- FREE FLOORING UPGRADES TILL 20/12/18



Call BELINDA JACKSON on 0425 853 625 to discuss your new home at Ironwood  
[ironwood.net.au](http://ironwood.net.au)